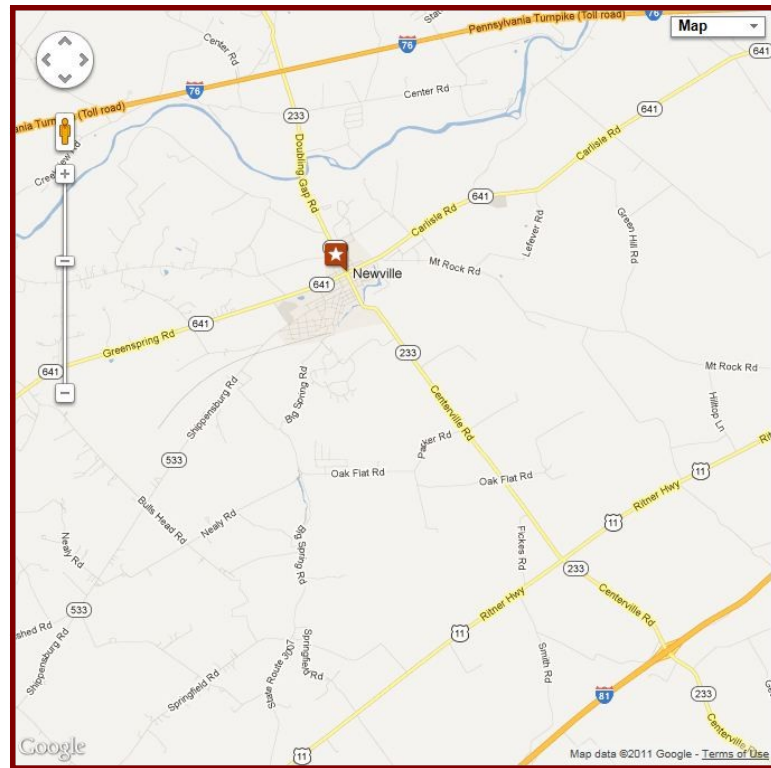


HISTORY IN THE MAKING

With a past as diverse as it is storied, Literary Hall is described in the National Register as “The oldest of three social buildings in the Newville Historic District...a prominent Greek Revival building...constructed as a cultural, social, and educational public building...used by the precursor of Shippensburg University as well as for community activities.” Over the years, this distinctive building has also served as a normal school, a performing arts house, an opera house, a church, and a motion picture theater! Most historically significant has been the structure’s role as the community’s principal meeting and entertaining space from the time of its construction in 1854 by the Big Spring Literary Institute through the early 20th century.

Listed as a contributing resource in the National Register nomination for the Newville Historic District, St. Paul Lutheran Church was constructed in 1900-1901 after having rented space in Literary Hall since 1879. The cornerstone for this exquisite Gothic Revival style church was laid on June 24, 1900 with a total cost for the building and its furnishings of \$10,000.

Today Literary Hall and Olde St. Paul’s are reborn as part of the Apartments at Newville Towne Centre, a project that is destined to return these elegant properties to their original resplendence and prominence in the community.



THE APARTMENTS AT NEWVILLE TOWNE CENTRE



LITERARY HALL FLATS & OLDE ST. PAUL LOFTS

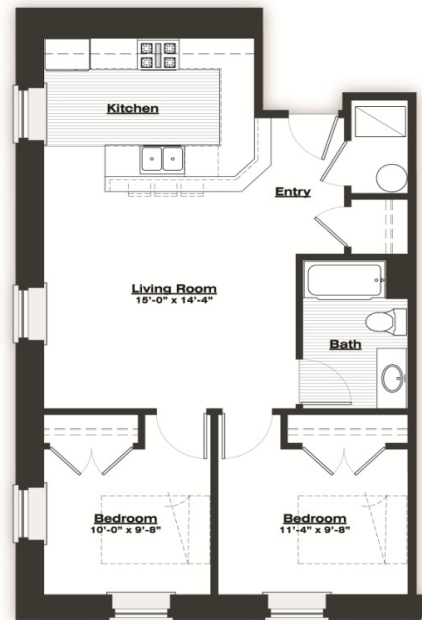
Located in the heart of historic downtown Newville, Pennsylvania, these distinctively restored residences offer an unusual blend of quaint, small town appeal and elegant, uptown style. Featuring thoroughly modern conveniences and uncompromising attention to detail, the Apartments at Newville Towne Centre have been meticulously designed to maintain the architectural integrity and historic relevance of the downtown landscape. For those searching for just the right place to call home, look no further than the Apartments at Newville Towne Centre. Exceptionally stylish....Surprisingly affordable.

3-T Investors, L.P.

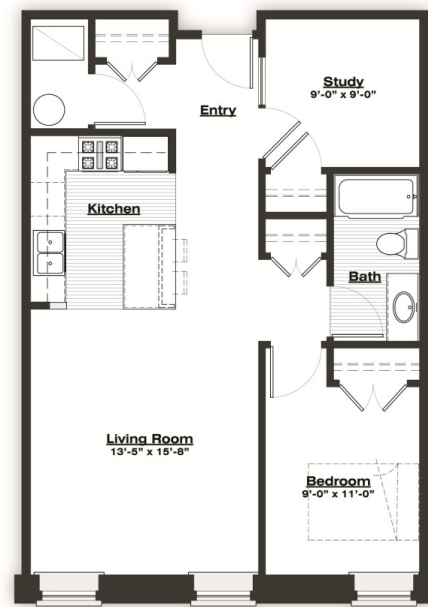
170 Stover Drive ♦ Carlisle, PA 17015 ♦ 717-249-3733
info@tuckey.com ♦ www.tuckey.com

3-T Investors, L.P. 170 Stover Drive ♦ Carlisle, PA 17015 ♦ 717-249-3733
Contact: Georgia Hasse ♦ info@tuckey.com

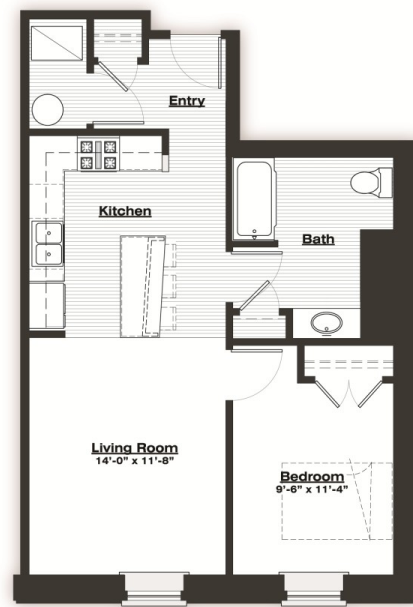
FLOOR PLANS: LITERARY HALL



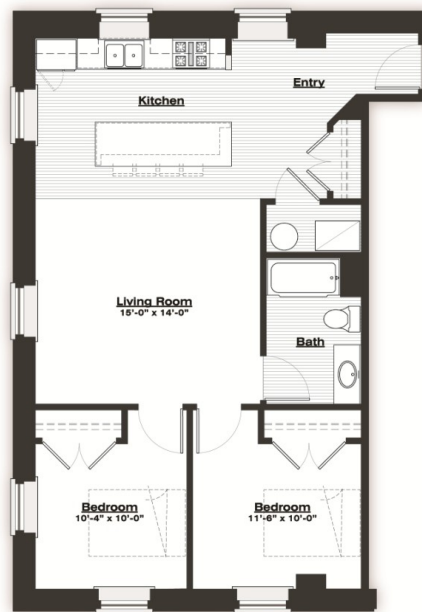
LH201
LITERARY HALL
2 Bed | 1 Bath | 777 S.F.



LH202
LITERARY HALL
1 Bed | 1 Bath | 769 S.F.



LH203/303
LITERARY HALL
1 Bed | 1 Bath | 650 S.F.



LH301
LITERARY HALL
2 Bed | 1 Bath | 842 S.F.



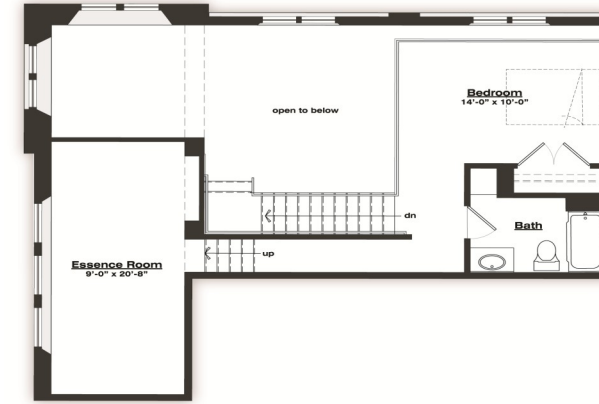
LH302
LITERARY HALL
1 Bed | 1 Bath | 769 S.F.



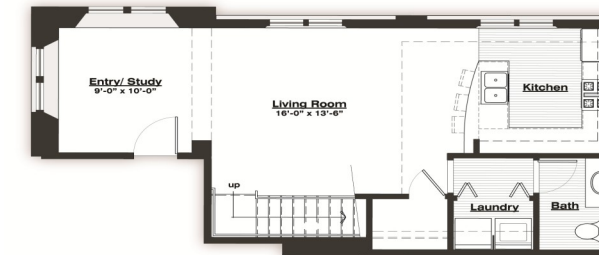
Literary Hall circa 1900 (above)
and today (below)



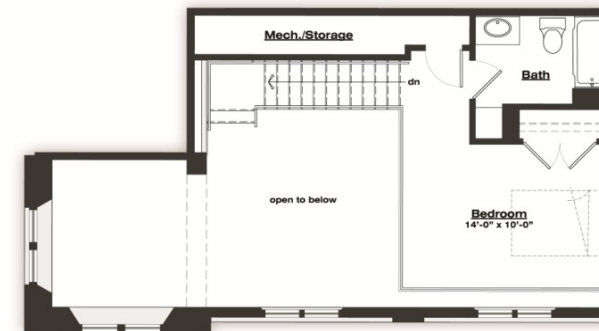
FLOOR PLANS: OLDE ST. PAUL



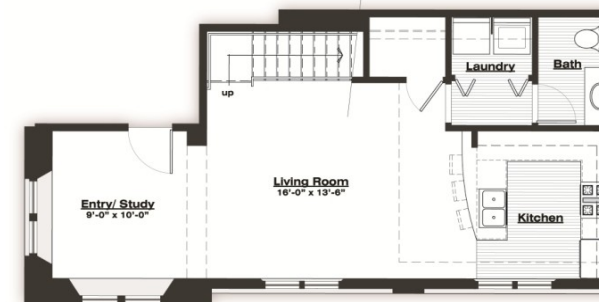
upper level



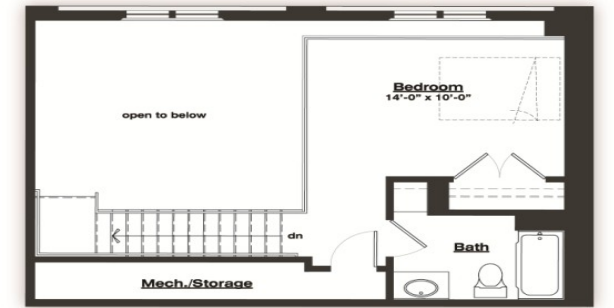
SP201
OLDE ST. PAUL
entry level
2 Bed | 1.5 Bath | 1,100 S.F.



upper level



SP203
OLDE ST. PAUL
entry level
1 Bed | 1.5 Bath | 935 S.F.



upper level



SP202/204
OLDE ST. PAUL
entry level
1 Bed | 1.5 Bath | 810 S.F.

SPECIAL POINTS OF INTEREST

- 1 and 2 Bedroom Units Available
- Sizes Ranging from 650-1000 Square Feet
- Spacious Kitchens with Modern Appliances
- Distinctive Architectural Details
- Premium Quality Fixtures
- Washer and Dryer In Larger Units
- On Site Laundry Facility
- Ample Off Street Parking
- Security Access
- Elevator
- Green Courtyard
- Retail/Commercial Leasing Available

THE APARTMENTS AT NEWVILLE TOWNE CENTRE