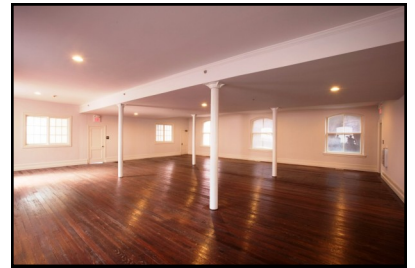




## 3-T Investors, L.P.

Residential and Commercial Space for lease.

## The Newville Towne Centre Development Project



Located in the heart of historic downtown Newville, Pennsylvania, the Newville Towne Centre development project comprises ten residential apartments and three distinctively restored commercial units that have been meticulously designed to maintain the architectural integrity and historic relevance of the downtown landscape.

Situated in Newville's historic Literary Hall (1 W. Big Spring Avenue) and old St. Paul's Church (7 W. Big Spring Avenue), both of which are listed in the National Register, these three unique commercial tenant spaces (approximately 2,400 square feet, 2,400 square feet, and 650 square feet) provide an ideal locale and unique opportunity for a variety of business applications, including office, retail, and/or restaurant space. For those searching for just the right location place for their home or business, look no further than Newville Towne Centre. Exceptionally quaint... Thoroughly modern... Surprisingly affordable. For more information, call 3-T Investors, L.P., 717-249-3733 or email [info@tuckey.com](mailto:info@tuckey.com) today!